



**RENAISSANCE
UNIVERSITY
INDORE**



**SCHOOL OF
MANAGEMENT (PG)**

PROGRAMS OFFERED

 YOUR JOURNEY TO BUSINESS LEADERSHIP STARTS HERE



MBA + PGP
Business Analytics



PGDM
360° Dual



MBA
Core Dual



MBA Hospital
Administration



MBA + PGP BUSINESS ANALYTICS

Our comprehensive MBA + PGP Business Analytics course equips you for success in the data-driven business world. It offers specializations in:

1. Finance
2. Marketing
3. HR
4. Super Specialization in Business Analytics

Ensuring a well-rounded skill set. Practical experience through projects & internships enhances learning, while prestigious certifications from Harvard Business Publishing & Microsoft validate expertise. The curriculum is industry-curated and updated with the latest trends, with contributions from industry giants.

Dedicated faculty and collaborations with INube provide mentorship and real-world experience. Advanced analytics tools enable confident data analysis and decision-making. **Join us to unlock your potential and elevate your career in the data-driven business world.**

COURSE HIGHLIGHTS

- ▶ Cutting-edge Curriculum in **Finance, Marketing, Human Resource & Business Analytics.**
- ▶ Specializations available in various areas of business for personalized studies.
- ▶ Harvard Business Publishing certification for added value.
- ▶ Microsoft certifications in Excel, PowerPoint, & SQL to demonstrate technical skills.
- ▶ Risk management training to identify & mitigate risks.
- ▶ Industry-curated curriculum by iNube for relevance.
- ▶ Three-month Capstone Project for hands-on experience.

ELIGIBILITY : Bachelor's Degree from a Recognized University with a Minimum Aggregate Score of 50% (45% for SC/ST/OBC) & a Min. Duration of 3 Years to be Eligible.

Fees for the Program

MBA+PGP Business Analytics - Rs 2,89,000/- Per Year
Payable in 2 Equal Installments Rs 1,44,500/- Each
(Zero cost EMI Option also Available), Course Duration- 2 Years

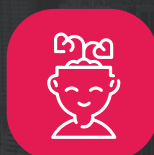
Course Specializations



FINANCE



MARKETING



HUMAN
RESOURCES



SUPER SPECIALISATION
CERTIFICATION
(BUSINESS ANALYTICS)



PGP
CERTIFICATE



PGDM 360° DUAL PROGRAMME

At Renaissance University, the PGDM 360° program provides students with a comprehensive postgraduate management education that covers 5 functional specializations:

- 1. Finance**
- 2. Marketing**
- 3. Human Resources**
- 4. Supply Chain Management**
- 5. Operation Management**

We focus on leadership & strategic thinking. The program provides a 360° approach to management education, covering technical, behavioral, & conceptual skills. It also places a strong emphasis on leadership & strategic thinking, which are essential for success in today's fast-paced business environment.

Overall, the PGDM 360° program at Renaissance University is designed to equip students with the knowledge, skills, and practical experience needed to succeed in a wide range of management roles.

COURSE HIGHLIGHTS

- ▶ PGDM 360° offers 5 specializations in Finance, Marketing, Human Resources, Operations Management, & Supply Chain Management With Industry Certifications.
- ▶ Graduates are prepared for management and leadership roles.
- ▶ Industry connections provide valuable insights and networking opportunities.
- ▶ Case Studies, Research & Live Projects.
- ▶ Strong curriculum regularly updated to stay relevant.
- ▶ Entrepreneurship focus fosters an entrepreneurial spirit.
- ▶ Graduates can expect high-paying jobs in top organizations.

ELIGIBILITY : Bachelor's Degree from a Recognized University with a Minimum Aggregate Score of 50% (45% for SC/ST/OBC) & a Min. Duration of 3 Years to be Eligible.

Fees for the Program

360° Dual Programme - Rs 1,31,500/- Per Year
Payable in 2 Equal Installments Rs 65,750/- Each
(Zero cost EMI Option also Available), Course Duration- 2 Years

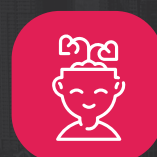
Course Specializations



FINANCE



MARKETING



HUMAN
RESOURCES



SUPPLY CHAIN
MANAGEMENT



OPERATIONS
MANAGEMENT



MBA CORE DUAL DEGREE PROGRAMME

Our MBA program, spanning four semesters, is designed to create Managerial Artists—leaders with strategic vision, social sensitivity, and the ability to excel in dynamic corporate environments.

Key features of the program include:

- **Language labs and expert-led sessions to enhance communication skills**
- **Annual seminars and CEO guest lecturers for industry insights**
- **Business simulation games & personal growth labs for real-world learning**
- **Personality development workshops and psychological profiling to refine leadership skills**

Students can customize their journey with diverse electives and specializations, ensuring career-focused learning. With 85% attendance and successful semester completion, benefit from guaranteed placements. Receive expert guidance to turn entrepreneurial ideas into thriving startups, covering funding, legalities, and growth strategies.

COURSE HIGHLIGHTS

- **Specialization offered** : Marketing, Finance & HR.
- **Career Advancement Opportunities** : Unlock your potential with diverse placement opportunities designed to shape your professional success.
- **Assured Job Placement** : Each student is provided with 20-25 placement opportunities with package range 4-7 LPA. Secure guaranteed placements by maintaining 85% attendance and successfully completing your semesters.
- **Entrepreneurial Excellence** : Bring your entrepreneurial vision to life with expert support in funding, legal processes, and seamless incorporation. Gain the tools and strategies to build and grow your startup successfully.
- Highly Potential Placements Drive.

ELIGIBILITY : Bachelor's Degree from a Recognized University with a Minimum Aggregate Score of 50% (45% for SC/ST/OBC) & a Min. Duration of 3 Years to be Eligible.

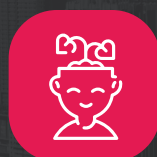
Fees for the Program

MBA Core Dual Degree - Rs 1,00,000/- Per Year
Payable in 2 Equal Installments Rs 50,000/- Each
(Zero cost EMI Option also Available), Course Duration- 2 Years

Course Specializations



FINANCE



HUMAN
RESOURCES



MARKETING



MBA HOSPITAL ADMINISTRATION PROGRAMME

An MBA in Hospital Administration is a prestigious post-graduate degree program that equips students with the skills and knowledge needed to take on leadership roles in the healthcare industry. Our program at Renaissance University covers a range of essential topics, including healthcare finance, regulations, operations, management, information systems, and policy.

With our MBA in Hospital Administration, you'll gain a deep understanding of the healthcare industry and be well-equipped to tackle the unique challenges that come with managing healthcare organizations. Our faculty consists of experienced professionals who bring real-world expertise to the classroom, and our curriculum is designed to provide you with a comprehensive education that prepares you for success in your career.

In addition to the high-quality education you'll receive, pursuing an MBA in Hospital Administration from our university also provides you with opportunities to network with other healthcare professionals & advance your career in a challenging & rewarding field. Whether you're interested in managing a hospital, clinic, or other healthcare organization, our MBA in Hospital Administration can help you achieve your goals & become a leader in the healthcare industry.

COURSE HIGHLIGHTS

- Placements with good packages at top hospitals.
- Trains graduates for healthcare leadership roles.
- Specialized knowledge and skills for healthcare organization management.
- Covers healthcare finance, regulations, operations, management, and policy
Provides internships, projects, and practical experiences.
- Prepares students for roles like hospital administrator, health systems manager, and health information manager.

ELIGIBILITY : Bachelor's Degree from a Recognized University with a Minimum Aggregate Score of 50% (45% for SC/ST/OBC) & a Min. Duration of 3 Years to be Eligible.

Fees for the Program

MBA Hospital Administration Rs. 1,00,000/- Per Year
Payable in 2 Equal Installments Rs. 50,000/- Each
(Zero cost EMI Option also Available), Course Duration- 2 Years

Course Specializations



HOSPITAL
ADMINISTRATION

THEY MADE US PROUD



Kenny Jain
Willis Dubai Package
16 LPA



Paritosh Jaiswal
Willis Dubai
16 LPA



Ansh Sooryawanshi
INube Solutions
10 LPA



Anshika Bhadoriya
INube Solutions
10 LPA



Aditi Agrawal
INube Solutions
10 LPA



Ashi Agrawal
INube Solutions
10 LPA



Ruchika Jadiya
RANGE Investment Dubai
9.6 LPA



Shivin Kumar Dubey
Gulf Oasis Dubai
9.6 LPA



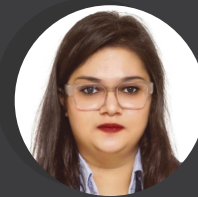
Sakshi Pitliya
Gargash Dubai
9.6 LPA



Ankit Tiwari
INube Solutions
9 LPA



Ekta Joshi
INube Solutions
9 LPA



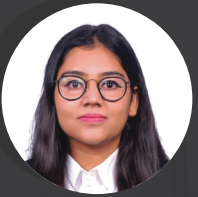
Sakshi Modi
INube Solutions
9 LPA



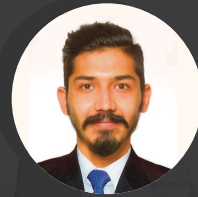
Meenal Singh
Fixpert
8.6 LPA



Mayank Yadav
INube Solutions
9 LPA



Shreya Mehta
Seguro Insurance Dubai
8.4 LPA



Harshdeep Singh
European Insurance
Brokers Dubai
8.4 LPA



Raghav Kung
Seguro Dubai
8.4 LPA



Shubham Tripathi
Cosmos Dubai
8.4 LPA



Shubham Jaiswal
Cosmos Dubai
8.4 LPA



Abhijit Singh
Global Insurance
8 LPA

OUR TOP RECRUITERS





ABOUT RENAISSANCE UNIVERSITY

At Renaissance University, we forge "Nation Builders" - exceptional individuals driving India's ascent to superpower status. With education as the cornerstone of every profession, our revered teachers impart the knowledge & skills needed for success. We prioritize a balanced, humanistic approach, fostering innovative thinking and embracing fresh ideas. Dedicated to our students' growth, we instill unity and togetherness, vital for Nation Building.



**UGC
APPROVED**



**350+
RECRUITERS**



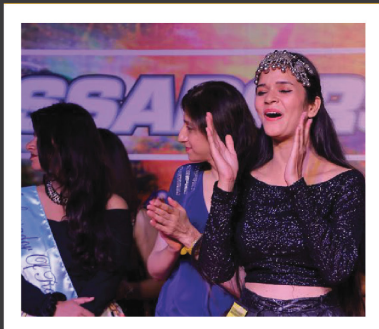
**EARLY
BATCH**



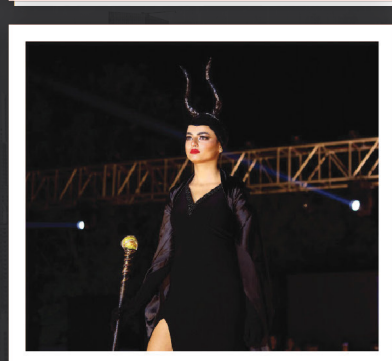
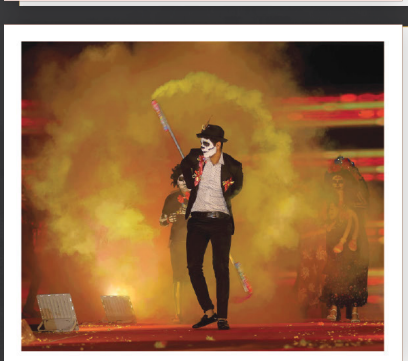
**EMI OPTIONS
AVAILABLE**

Our aim? Cultivating globally-minded professionals with a deep understanding of the world and a belief in humanity's interconnectedness. We encourage thinking beyond limits, molding well-exposed, profound thinkers who will shape the future as true nation builders.

AMBASSADORS



INDRADHANUSH





Scan for Virtual Tour!

UNIVERSITY CAMPUS

Gram Revti, Behind Aurobindo Hospital, Sanwer Road
Indore - 452015 | Tel : (0731) 66884150 / 151

OFFICE ADDRESS

201-202, HeadQuarter Building,
IDA Plot No. 54, Satya Sai Square, Indore (M.P.) - 452010



+91-9109954955
+91-9109977337



For More Details
www.renaissance.ac.in



Mail Us at
info@renaissance.ac.in