



**RENAISSANCE
UNIVERSITY
INDORE**



RENAISSANCE SCHOOL OF **NURSING & PARAMEDICALS**

At Renaissance University, pursuing a B.Sc. in Nursing is an immersive and transformative experience. This program is meticulously designed to furnish graduates with a comprehensive understanding of diverse healthcare practices, emphasizing the acquisition of crucial skills vital for providing not just competent but also deeply compassionate patient care.

It's a Journey that Instills Profound Insights & Nurtures the Essential Attributes for Success in Healthcare's Dynamic Field!

Courses Offered



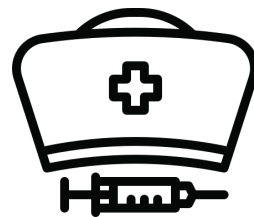
Our institution offers an array of diverse and enriching courses meticulously crafted to cater to the needs of aspiring healthcare professionals.

Explore a world of opportunities with our diverse programs:

Nursing Programs



**General Nursing
& Midwifery**



**B.Sc. Nursing
Program**

Paramedical Programs



**Bachelor's in
Physiotherapy (BPT)**

01



B.Sc. Nursing

At Renaissance University, pursuing a B.Sc. in Nursing is an immersive and transformative experience. This program is meticulously designed to furnish graduates with a comprehensive understanding of diverse healthcare practices, emphasizing the acquisition of crucial skills vital for providing not just competent but also deeply compassionate patient care.

It's a journey that instills profound insights and nurtures the essential attributes needed for success in the dynamic field of healthcare.

Course Highlights



- * **Integrative Learning:** Synthesize knowledge from physical, biological, behavioral sciences, & humanities to practice professional nursing & midwifery.
- * **Competent Practice:** Safely provide nursing interventions for individuals, families, populations, & communities at various developmental stages & health experiences.
- * **Comprehensive Healthcare:** Offer promotive, preventive, & restorative healthservices aligned with national health policies & programs.
- * **Ethical Decision-Making:** Integrate values, ethics, & legal aspects into nursing practice, respecting the dignity & worth of every individual.
- * **Leadership Development:** Apply leadership, autonomy & management concepts to enhance healthcare quality & safety.
- * **Technological Proficiency:** Leverage cutting-edge skills and technology to improve patient outcomes and foster seamless communication among healthcare teams.
- * **Collaborative Practice:** Work independently & collaboratively with diverse healthcare professionals, applying safety & quality improvement principles.
- * **Evidence-Based Care:** Integrate research findings & nursing theory into decision-making processes for evidence-based practice.
- * **Professional Growth:** Accept responsibility for personal & professional growth, ensuring accountability for nursing & midwifery practice.
- * **Global Contribution:** Actively participate in advancing the nursing profession to improve healthcare globally.

Course Eligibility



- * Open to both male & female candidates, ensuring a balanced gender representation.
- * The candidate has to pass a common entrance exam at the time of admission counselling day.
- * **Age Requirement:** Candidates must be between 17 to 35 years old as of December 31st in the year of admission.
- * **Educational Qualification:** Successful completion of Senior Secondary School Certificate Examination (10+2) from a recognized statutory Board.
- * **Subject Requirement:** Candidates must have individually passed in Physics, Chemistry, Biology (PCB), & English in 10+2, with a minimum of 45% marks in PCB.
- * **Proficiency in English:** A compulsory subject in 10+2, essential for admission to B.Sc. Nursing.

Course Fee for B.Sc Nursing : Rs 1,05,000/- Per Year

Payable In 2 Equal Installments of **Rs 52,500/-**

Zero Cost EMI Option Available

Course Duration - 4 Years

Candidates must have completed 10+2 with PCB & English are mandatory subjects. Candidates must have obtained at least 45% marks in Class 12th exam.

"Innovate, Educate, Advocate: Nursing with Purpose"



General Nursing & Midwifery (GNM)

The General Nursing & Midwifery (GNM) program at Renaissance University is a comprehensive course that prepares nurses to provide exceptional healthcare using a structured nursing process.

Our curriculum focuses on nurturing competent professionals who excel in various healthcare settings, delivering both curative and preventive services.

Course Highlights



- * **Comprehensive Nursing Process:** Develop competency in providing healthcare to individuals, both sick and well, by applying problem-solving techniques and evaluating the effectiveness of nursing care.
- * **Holistic Health Promotion:** Provide effective nursing care to maintain the best possible level of health in all aspects, promoting self-care among patients under your care.
- * **Interdisciplinary Collaboration:** Function effectively within the health team and community, utilizing knowledge of human relations and communication skills to enhance patient care.
- * **Community Engagement:** Participate actively as a member of the health team in delivering curative, preventive, promotive, and rehabilitative healthcare services, mobilizing community resources for community involvement.
- * **Ethical Practice:** Demonstrate the use of ethical values in personal and professional life, fostering a culture of integrity and trust in healthcare practice.
- * **Continuous Professional Development:** Recognize the need for continuing education, staying updated with advancements in the field for ongoing professional growth.
- * **Educational and Leadership Skills:** Develop basic skills in teaching patients and administering nursing care, as well as in administration and leadership, fostering effective teamwork within the health team and community.
- * **Research Contribution:** Contribute to research activities, advancing nursing knowledge and practices.

Course Eligibility



- * Successful completion of 10+2, Candidates from State Open School (recognized by State Government) and National Institute of Open School (NIOS, recognized by Central Government) are also eligible. Preferably, candidates should have a Science background.
- * Alternatively, candidates with 40% marks in vocational ANM course from a school recognized by the Indian Nursing Council, or those with 40% marks in Vocational.
- * Stream-Healthcare Science from a recognized CBSE board/State/Centre, are eligible.
- * Registered ANM candidates with pass marks are also eligible. Candidates must be medically fit for admission.
- * Admissions take place once a year, ensuring focused and comprehensive learning experiences for our students.

Course Fee for GNM PROGRAM : Rs 73,500/- Per Year

Payable In 2 Equal Installments of **Rs 36,750/-**

Zero Cost EMI Option Available

Course Duration - 3 Years

**12th Pass from any Stream with Minimum 45 %
can Apply for this Course.**

"Discover the Art and Science of Nursing with Us"



Bachelor's in Physiotherapy (BPT)

At Renaissance University, our Bachelor's in Physiotherapy (BPT) program stands as a beacon of excellence, providing students with a transformative educational journey in the field of physical therapy.

Rooted in evidence-based practices and cutting-edge techniques, our BPT program prepares students to become skilled physiotherapists capable of enhancing the well-being and mobility of individuals across diverse populations.

Course Highlights



- * **Comprehensive Curriculum:** Dive deep into a holistic curriculum that encompasses anatomy, physiology, biomechanics, and advanced therapeutic interventions, ensuring a strong foundation in physiotherapy principles.
- * **Hands-On Training:** Benefit from extensive hands-on training and clinical exposure, allowing students to apply theoretical knowledge to real-life patient scenarios under expert supervision.
- * **Patient-Centered Care:** Emphasize patient-centered care, honing communication skills and empathy to build strong therapeutic relationships and facilitate optimal healing environments.
- * **Specialized Expertise:** Explore specialized areas such as sports rehabilitation, neurological physiotherapy, pediatric care, and geriatric physiotherapy, tailoring your expertise to diverse patient needs.
- * **Research and Innovation:** Engage in research activities, contributing to the advancement of physiotherapy knowledge and techniques, and fostering a culture of innovation in healthcare.
- * **Interdisciplinary Collaboration:** Collaborate with healthcare professionals, learning the importance of interdisciplinary teamwork for comprehensive patient care.
- * **Professional Ethics:** Uphold the highest ethical standards, understanding the moral and legal aspects of physiotherapy practice and respecting the dignity and autonomy of each patient.
- * **Global Perspective:** Gain a global perspective on healthcare practices, preparing for a dynamic career in the international healthcare arena.

Course Eligibility



- * Successful completion of 10+2 with Physics, Chemistry, and Biology (PCB) from a recognized board, with a minimum aggregate of 50% marks.
- * Candidates should have a genuine interest in the field of physiotherapy, demonstrating a passion for improving the quality of life for others through therapeutic interventions.
- * Admissions are based on merit, ensuring that dedicated and passionate individuals are selected to join our BPT program.
- * Candidates must meet the medical fitness standards essential for practicing physiotherapy & should be committed to continuous learning & professional growth.
- * Our aim is to identify and invite those driven, passionate individuals who embody the qualities essential for success in our BPT program and are poised to contribute significantly to the field of physiotherapy.

Course Fee for BPT Program : Rs 63,000/- Per Year

Payable In 2 Equal Installments of **Rs 31,500/-**

Zero Cost EMI Option Available

Course Duration - 4 Years

Candidates must have completed 10+2 with Physics, Chemistry, and Biology as mandatory subjects. Candidates must have obtained at least 45% marks in Class 12th exam.

"Transforming Lives Through Motion: Join Us Today!"

State-of-the-Art Facilities at RU



Clinical Facilities

➤ PARENT HOSPITAL: JUPITER HOSPITAL

- * A multi-specialty tertiary care hospital renowned for its patient-centric approach.
- * Comprehensive services from birthing and newborn care to advanced treatments like cancer care and multi-organ transplants.
- * International standards of technology infrastructure and clinical care delivered by a team of super-specialist doctors and dedicated nursing paramedic staff.

Institute Facilities

➤ COMPUTER LAB

- * Equipped with fully functional computers and Wi-Fi facilities.
- * Supervised by a skilled computer instructor, offering guidance on various applications.
- * Access to Microsoft Office, internet browsers like Internet Explorer, Google Chrome, and Mozilla Firefox.



Institute Facilities



➤ ADVANCE LIBRARY

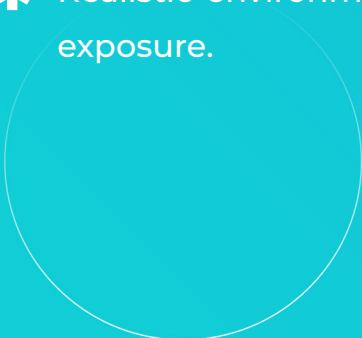
- * Extensive collection of books, e-journals, and online resources accessible to faculty and students.
- * Microsoft Internet Explorer, Google Chrome, and Mozilla Firefox available for internet access.
- * Dive into a wealth of academic resources—books, journals, and articles—to fuel your research and learning journey.

Laboratory Facilities



➤ NURSING FOUNDATION LAB

- * Equipped with advanced CPR dummies, manikins, and instruments for nursing procedures.
- * Realistic environment for students to practice nursing procedures before clinical exposure.



Laboratory Facilities

► OBG LAB (OBSTETRICS & GYNECOLOGY LAB)

- * Well-equipped with birthing simulators, pelvis models, and obstetrical instruments.
- * Enables students to practice and demonstrate competency in obstetric skills, enhancing knowledge in mother and newborn care.



► ANATOMY & PHYSIOLOGY LAB

- * Provides hands-on experience in understanding human anatomy and physiology.
- * Features human cadaver dissection, microscopic studies, and identification of microorganisms.



➤ NUTRITION LAB

- * Dedicated space for onsite demonstration, cooking, and display of therapeutic diets.
- * Equipped with gas stoves, refrigerators, microwave, and a variety of utensils for preparing balanced diets.



➤ ADVANCE NURSING LAB

- * Focuses on teaching advanced nursing procedures and quality CPR practices.
- * Enhances students' practical skills and knowledge under expert guidance. Guided instruction nurtures proficiency, fostering a deeper understanding through practical application.



➤ PEDIATRIC LAB

- * Equipped with pediatric CPR manikins, procedure manikins, baby dolls, and various models.
- * Provides a simulated environment for students to develop skills in pediatric nursing procedures.



➤ COMMUNITY LAB

- * Facilitates learning about comprehensive care for individuals, families, and communities.
- * Equipped with community bags, models, audio-visual aids, and resources for conducting health education programs.



➤ PRE CLINICAL SCIENCE LAB

- * Provides an in-depth understanding of anatomical structures, physiological functions, biochemical composition, and microbiology.
- * Students witness human cadaver dissection and learn about microscopic pathogens, enhancing their knowledge of human biology and pathology.

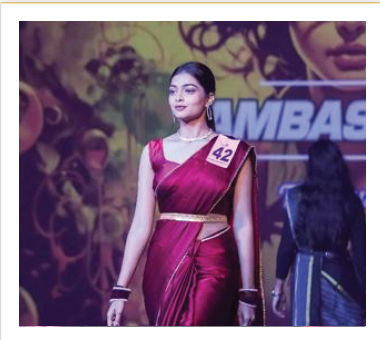
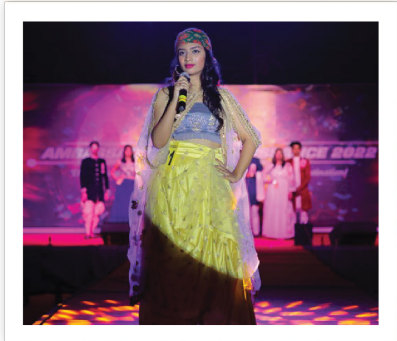


At Renaissance University, we pride ourselves on providing top-notch facilities that foster experiential learning and skill development, ensuring our students are well-prepared for successful careers in their respective fields.

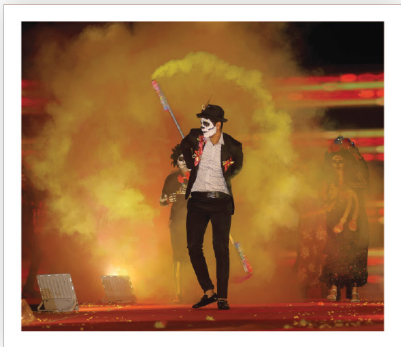
Renaissance University's School of Nursing fosters compassionate healthcare professionals through hands-on experience, shaping skilled nurses and empathetic physiotherapists. Prepare for a impactful healthcare career with us—top facilities, expert faculty, patient-centered focus.

**Join to Nurture Tomorrow's
Healers Where Compassion Meets Excellence!**

Ambassadors



Indradhanush





Scan for Virtual Tour!

—— **UNIVERSITY CAMPUS** ——

**Gram Revti, Behind Aurobindo Hospital, Sanwer Road
Indore - 452015 | Tel : (0731) 66884150 / 151**

—— **OFFICE ADDRESS** ——

**201-202, HeadQuarter Building,
IDA Plot No. 54, Satya Sai Square, Indore (M.P.) - 452010**

Admissions Open Now



**+91-9109954955
+91-9109977337**



**For More Details
www.renaissance.ac.in**



**Mail Us at
info@renaissance.ac.in**